

CERTIFICATE OF LOCATION OF GOVERNMENT CORNER

NORTHEAST Corner of Section 16, Township 106, Range 39, 5TH P.M.

STATE OF MINNESOTA, County of MURRAY

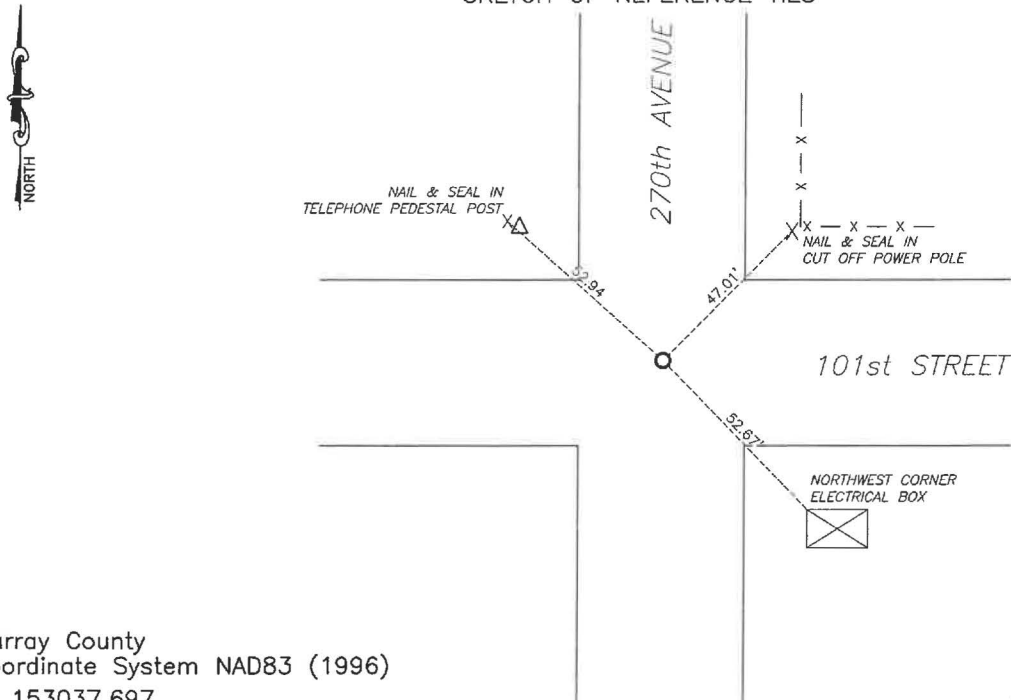
At the corner location shown on the sketch:

☒ On 7/23/2024 found a large field stone with a wooden stake along the east side
DATE

☒ left monument as found, ☐ lowered monument, ☐ removed monument (explain)

☒ On 1/29/2025 placed a 5/8" iron with seal 43844 over stone.
DATE

SKETCH OF REFERENCE TIES



Murray County
Coordinate System NAD83 (1996)
N: 153037.697
E: 564152.022

WGS84
LAT: 43°59'35.8016"
LON: -95°31'22.5132"

Statement of evidence relative to this corner location is on back of page.

I hereby certify that this document and the data contained herein was prepared by me or under my direct supervision.

Daniel L. Buettel
License No. 43844

3/13/2025
DATE

MAR 13 2025

MURRAY COUNTY RECORDER

Statement of Evidence

NORTHEAST CORNER SECTION 16, T106N, R39W OF THE 5TH P.M.

In September 1858 W.J. Neely surveyed the east township line.

In July of 1861 J.W. Myers surveyed the north, south, and west township lines.

In August of 1861 Wellman & Smoot subdivided the township.

A survey by J.W. Woolstencroft dated June 24, 1913 notes a stone at the corner.

On April 10, 1974 a 12"x12" stone was located at the corner 3' below road grade and a steel pin was placed above it.

On July 23, 2024 Bueltel-Moseng Land Surveying found a large 12"x12" stone with a wooden stake along the east side of the stone, placed a 1" solid iron along the west side.

Returned on January 29, 2025 and placed a $\frac{5}{8}$ " iron with seal #43844 over top of the stone.